

decoding

# SUPPORT & ACCOUNTABILITY

DESIGNATIONS / REPORT CARD / IL-EMPOWER



## Transparent Designations

Every school receives an annual designation on the Illinois Report Card. The designation is based on the school's overall data for all of the accountability indicators, as well as the data for individual student groups.

<b>Exemplary</b>	<ul style="list-style-type: none"><li>■ Performance in the top 10% of all schools</li><li>■ High schools with graduation rate higher than 67%</li><li>■ No underperforming student groups at or below the "all students" group in the lowest-performing 5% of all schools</li></ul> <p> Eligible to apply to serve as an IL-EMPOWER Learning Partner</p>				
<b>Commendable</b>	<ul style="list-style-type: none"><li>■ Performance not in the top 10% of all schools</li><li>■ High schools with graduation rate higher than 67%</li><li>■ No underperforming student groups at or below the "all students" group in the lowest-performing 5% of all schools</li></ul> <p> Eligible to apply to serve as an IL-EMPOWER Learning Partner</p>				
<b>Underperforming</b>	<ul style="list-style-type: none"><li>■ One or more student groups underperforming at or below the "all students" group in the lowest-performing 5% of all schools; groups must have at least 20 students in at least three indicators</li></ul> <table border="0"><thead><tr><th>STUDENT GROUPS</th><th>RACIAL AND ETHNIC GROUPS</th></tr></thead><tbody><tr><td><ul style="list-style-type: none"><li>– Economically disadvantaged students</li><li>– Students with disabilities</li><li>– <i>Students formerly with a disability (coming soon)</i></li><li>– English Learners</li><li>– Former English Learners</li></ul></td><td><ul style="list-style-type: none"><li>○ Hispanic or Latino</li><li>○ American Indian or Alaska Native</li><li>○ Asian</li><li>○ Black or African American</li><li>○ Native Hawaiian or Other Pacific Islander</li><li>○ White</li><li>○ Two or More Races</li></ul></td></tr></tbody></table> <p> Completes a Work Plan for School Improvement and may choose to receive targeted support through IL-EMPOWER process</p>	STUDENT GROUPS	RACIAL AND ETHNIC GROUPS	<ul style="list-style-type: none"><li>– Economically disadvantaged students</li><li>– Students with disabilities</li><li>– <i>Students formerly with a disability (coming soon)</i></li><li>– English Learners</li><li>– Former English Learners</li></ul>	<ul style="list-style-type: none"><li>○ Hispanic or Latino</li><li>○ American Indian or Alaska Native</li><li>○ Asian</li><li>○ Black or African American</li><li>○ Native Hawaiian or Other Pacific Islander</li><li>○ White</li><li>○ Two or More Races</li></ul>
STUDENT GROUPS	RACIAL AND ETHNIC GROUPS				
<ul style="list-style-type: none"><li>– Economically disadvantaged students</li><li>– Students with disabilities</li><li>– <i>Students formerly with a disability (coming soon)</i></li><li>– English Learners</li><li>– Former English Learners</li></ul>	<ul style="list-style-type: none"><li>○ Hispanic or Latino</li><li>○ American Indian or Alaska Native</li><li>○ Asian</li><li>○ Black or African American</li><li>○ Native Hawaiian or Other Pacific Islander</li><li>○ White</li><li>○ Two or More Races</li></ul>				
<b>Lowest-Performing</b>	<ul style="list-style-type: none"><li>■ In the lowest-performing 5% of Title I eligible schools statewide</li><li>■ High schools with graduation rate at or below 67%</li></ul> <p> Completes a Work Plan for School Improvement and receives comprehensive support through IL-EMPOWER process</p>				



**Illinois**  
State Board of  
Education

Visit

[isbe.net/support](https://isbe.net/support)



Country Club Hills SD 160  
 Zenon J Sykuta School  
 4301 180th St  
 Country Club Hills, ILLINOIS 60478  
 GRADES - PK K 1 2

Mrs. Brenda Richardson  
 Tenure - 0  
 Email - [brenda.richardson@cch160.org](mailto:brenda.richardson@cch160.org)  
 (708) 957-6210



**Summative Designation - Underperforming**  
**Student Group - IEP**  
**Title 1 Status - Targeted Assistance Title One Program**  
<https://www.isbe.net/Documents/ESSAStatePlanforIllinois.pdf>

**District Funding Tier - 1**  
**Capacity to meet expectations - 62.0**  
**State Senate District - 19**  
**State Representative District - 038**

State and federal laws require public school districts to release report cards to the public each year.

This year, we have updated the report card to provide a full picture of school performance beyond just test scores. A display of this data designed with parents and communities in mind is available on [illinoisreportcard.com](http://illinoisreportcard.com). All of the metrics posted on [illinoisreportcard.com](http://illinoisreportcard.com) are also included in this report.

**STUDENTS**

STUDENT ENROLLMENT												
	All	White	Black	Hispanic	Asian	Native Hawaiian /Pacific Islander	American Indian	Two or More Races	Students With IEPs	English Learners	Low Income	Homeless
School	343		307	10				17	48	16	252	10
			89.5%	2.9%				5.0%	14.0%	4.7%	73.5%	2.9%
District	1,205	16	1,108	34				39	152	35	922	42
		1.3%	92.0%	2.8%				3.2%	12.6%	2.9%	76.5%	3.5%
State	2,001,529	961,211	336,956	523,950	101,548	2,091	5,591	70,182	290,659	233,367	988,680	39,267
		47.9%	16.8%	26.1%	5.1%	0.1%	0.3%	3.5%	14.5%	11.6%	49.3%	2.0%

Low-income students come from families receiving public aid; live in institutions for neglected or delinquent children; are supported in foster homes with public funds; or are eligible to receive free or reduced-price lunches.  
 IEP Students are those students eligible to receive special education services.

English Learner students are those students eligible for transitional bilingual programs.  
 Total Enrollment is based on Serving School.  
 Homeless students are who do not have permanent and adequate homes.

CHRONIC ABSENTEEISM											
	All	White	Black	Hispanic	Asian	Native Hawaiian /Pacific Islander	American Indian	Two or More Races	Students With IEPs	English Learners	Low Income
School	30.2%	28.6%	31.4%	0.0%	62.5%			0.0%	33.3%	37.5%	31.9%
District	20.7%	23.5%	21.4%	0.0%	40.0%			0.0%	28.3%	20.6%	18.2%
State	3.0%	19.7%	16.4%	2.4%	0.0%			11.3%	18.7%	20.9%	12.4%

STUDENT MOBILITY RATE													
	All	Male	Female	White	Black	Hispanic	Asian	Native Hawaiian /Pacific Islander	American Indian	Two or More Races	Students With IEPs	English Learners	Low Income
School	18.1%	17.2%	19.0%		18.7%	23.1%				6.3%	36.4%	7.1%	18.4%
District	15.5%	15.5%	19.0%	14.3%	15.8%	15.0%				10.9%	26.3%	8.8%	15.8%
State	6.9%	7.3%	6.4%	4.6%	13.5%	6.7%	6.4%	9.2%	10.8%	8.0%	10.1%	9.3%	10.0%

## INSTRUCTIONAL SETTING

TOTAL SCHOOL DAYS		8TH GRADERS PASSING ALGEBRA I	
Days			
School	174	School	
District	174	District	18.4
State	175	State	30.5

\* Parental contact includes parent-teacher conferences, parental visits to school, school visits to home, telephone conversations, and written correspondence.

STUDENT-TO-STAFF RATIOS					HEALTH AND WELLNESS (days per week)	
	Pupil-Teacher Elementary	Pupil-Teacher Secondary	Pupil-Certified Staff	Pupil-Administrator	School	District
School	--	--	--	--	3.0	3.0
District	15.4		11.4	241.0	3.0	3.0
State	19.0	19.3	11.1	180.6	3.0	3.0

AVERAGE CLASS SIZE (as of the first school day in May)											
Grades	K	1	2	3	4	5	6	7	8	9 - 12	Overall
School	23.0	27.0	33.0								28.0
District	23.0	27.0	33.0	26.0	23.0	27.0	27.0	23.0	21.0		24.0
State	19.0	19.0	20.0	20.0	21.0	21.0	21.0	20.0	20.0	20.0	20.0

TIME DEVOTED TO TEACHING CORE SUBJECTS (Minutes Per Day)												
Grades	Mathematics			Science			English/Language Arts			Social Science		
	3	6	8	3	6	8	3	6	8	3	6	8
School												
District	90	80	80	35	40	40	90	80	80	35	40	40
State	73	60	57	35	48	51	129	88	77	30	48	50

TEACHER INFORMATION (Full-Time Equivalents)											
	Total Number	Male	Female	White	Black	Hispanic	Asian	Native Hawaiian /Pacific Islander	American Indian	Two or More Races	Unknown
State	128,999	23.3	76.7	83.2	5.8	6.2	1.5	0.1	0.2	0.8	2.3

TEACHER INFORMATION (Continued)			
	Average Teaching Experience (Years)	% of Teachers with Bachelor's Degrees	% of Teachers with Master's & Above
School	--	--	--
District	12.0	40.2	59.8
State	13.2	38.5	61.0

Educator Qualifications		
	High Poverty Schools	Low Poverty Schools
District Inexperienced	7	
District With Emergency Credentials	0	
State Inexperienced	2	3
State With Emergency Credentials	0	0

Some teacher/administrator data are not collected at the school level.

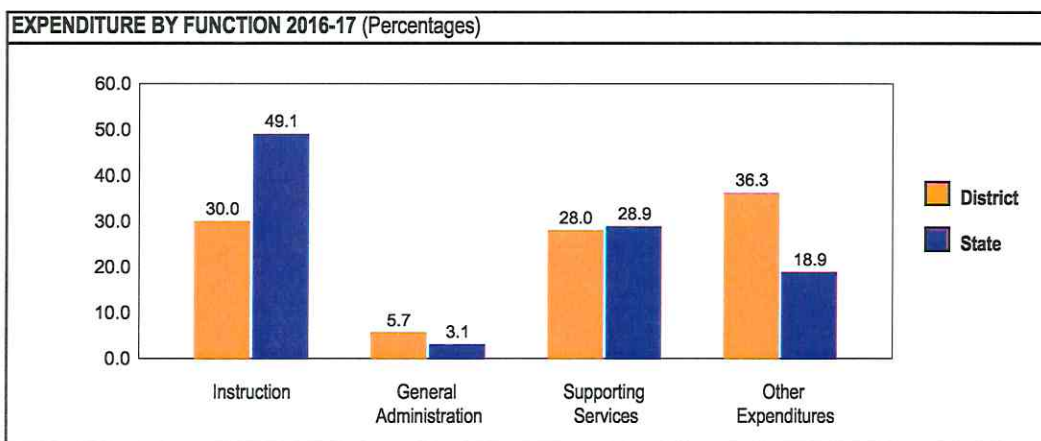
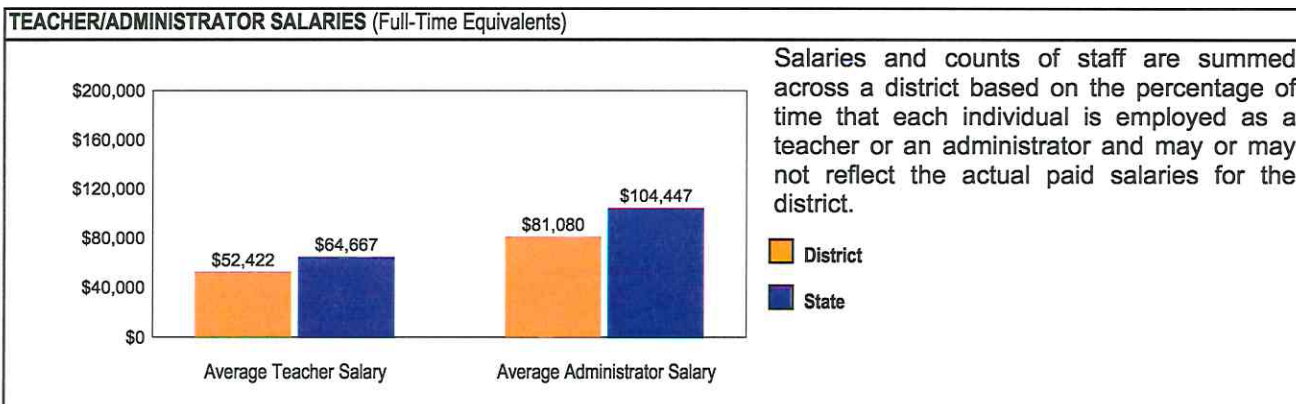
TEACHER RETENTION RATE	
School	78.2
District	69.4
State	84.3

TEACHER ATTENDANCE	
School	--
District	68.3
State	70.2

TEACHER EVALUATION	
School	--
District	
State	97.1

PRINCIPAL TURNOVER (Count)	
School	2.0
District	2.0
State	1.0

## SCHOOL DISTRICT FINANCES



**REVENUE BY SOURCE 2016-17**

	District	District %	State %
Local Property Taxes	\$7,467,031	43.2	63.1
Other Local Funding	\$319,086	1.8	5.0
General State Aid	\$6,229,683	36.0	17.6
Other State Funding	\$1,405,622	8.1	6.8
Federal Funding	\$1,882,827	10.9	7.5
<b>TOTAL</b>	<b>\$17,304,249</b>		

**EXPENDITURE BY FUND 2016-17**

	District	District %	State %
Education	\$15,339,180	56.8	71.6
Operations & Maintenance	\$1,017,891	3.8	7.1
Transportation	\$1,705,393	6.3	3.8
Debt Service	\$7,377,629	27.3	9.5
Tort	\$338,553	1.3	1.2
Municipal Retirement/ Social Security	\$288,688	1.1	2.1
Fire Prevention & Safety	\$54,452	0.2	0.7
Capital Projects	\$873,925	3.2	4.0
<b>TOTAL</b>	<b>\$26,995,711</b>		

**OTHER FINANCIAL INDICATORS**

	2015 Equalized Assessed Valuation per Pupil	2015 Total School Tax Rate per \$100	2016-17 Instructional Expenditure per Pupil	2016-17 Operating Expenditure per Pupil
District	\$117,154	6.27	\$7,399	\$15,572
State	**	**	\$8,024	\$13,337

\*\* Due to the way Illinois school districts are configured, state averages for equalized assessed valuation per pupil and total school tax rate per \$100 are not provided.

Equalized assessed valuation includes all computed property values upon which a district's local tax rate is calculated.

Total school tax rate is a district's total tax rate as it appears on local property tax bills.

Instructional expenditure per pupil includes the direct costs of teaching pupils or the interaction between teachers and pupils.

Operating expenditure per pupil includes the gross operating cost of a school district excluding summer school, adult education, bond principal retired, and capital expenditures.

**ACADEMIC PERFORMANCE**

COLLEGE ENROLLMENT		
	12 Months	16 Months
School District State	74.8	75.6

FRESHMEN ON TRACK	
School District State	86.6

CTE ENROLLMENT	
School District State	283,473

POST SECONDARY ENROLLMENT 12 MONTH						
	All	Public Institution	Private Institution	4 Yr	2 Yr	< 2 Yr
School District State	74.8%			32.1%	42.7%	0.0%

POST SECONDARY ENROLLMENT 16 MONTH						
	All	Public Institution	Private Institution	4 Yr	2 Yr	< 2 Yr
School District State	75.6%			32.3%	43.3%	0.0%

CLIMATE AND CULTURE													
	All	Male	Female	White	Black	Hispanic	Asian	Native Hawaiian /Pacific Islander	American Indian	Two or More Races	Students With IEPs	English Learners	Low Income
In School Suspensions	24	23	1		24						1		23
Out of School Suspensions	7	7	0		7						0		7
Expulsions	0	0	0		0						0		0
Incidents of Violence (including bullying and harassment)	18	18	0		18						0		17

4 YEAR GRADUATION RATE													
	Gender			Race / Ethnicity							English Learners	Students With IEPs	Low Income
	All	Male	Female	White	Black	Hispanic	Asian	Native Hawaiian /Pacific Islander	American Indian	Two or More Races			
School District State	85.4	82.5	88.4	90.6	75.0	80.7	93.6	81.0	79.8	84.7	76.5	68.6	77.0

HIGH SCHOOL 5-YEAR GRADUATION RATE													
	Gender			Race / Ethnicity							English Learners	Students With IEPs	Low Income
	All	Male	Female	White	Black	Hispanic	Asian	Native Hawaiian /Pacific Islander	American Indian	Two or More Races			
School District State	87.6	85.3	89.9	91.4	78.4	84.6	95.3	84.3	82.6	86.8	83.0	73.5	80.2

HIGH SCHOOL 6-YEAR GRADUATION RATE													
	Gender			Race / Ethnicity							English Learners	Students With IEPs	Low Income
	All	Male	Female	White	Black	Hispanic	Asian	Native Hawaiian /Pacific Islander	American Indian	Two or More Races			
School District State	87.7	85.3	90.1	91.7	78.3	84.7	95.3	86.9	82.4	86.9	83.0	74.9	80.3

DROP OUT RATE BY RACIAL/ETHNIC BACKGROUND AND OTHER INFORMATION													
	Gender			Race / Ethnicity							English Learners	Students With IEPs	Low Income
	All	Male	Female	White	Black	Hispanic	Asian	Native Hawaiian /Pacific Islander	American Indian	Two or More Races			
School District State	2.1	2.5	1.7	1.2	4.0	2.8	0.5	2.4	3.0	2.1	2.9	4.0	3.6

ELA PROFICIENCY													
School	All Students	Male	Female	White	Black	Hispanic	Asian	Native Hawaiian /Pacific Islander	American Indian	Two or More Races	Students With IEPs	English Learners	Low Income
	District	142	49	93	2	128	4				4	2	1
State	373,532	160,882	212,650	227,977	29,576	67,203	33,470	463	833	14,010	12,783	11,564	115,196
		30.9%	42.8%	46.8%	17.4%	24.8%	65.6%	44.7%	29.2%	40.0%	8.9%	10.9%	22.1%

MATH PROFICIENCY													
	All Students	Male	Female	White	Black	Hispanic	Asian	Native Hawaiian /Pacific Islander	American Indian	Two or More Races	Students With IEPs	English Learners	Low Income
School													
District	90	35	55	2	81	3				1	5	0	65
		7.9%	12.6%	20.0%	9.9%	13.0%				5.0%	4.8%	0.0%	9.4%
State	321,607	163,519	158,088	201,422	19,256	53,675	34,370	435	682	11,767	11,241	12,270	88,476
		31.3%	31.7%	41.3%	11.4%	19.7%	66.0%	41.4%	23.6%	33.6%	7.9%	11.1%	16.9%

ISA PROFICIENCY													
	All Students	Male	Female	White	Black	Hispanic	Asian	Native Hawaiian /Pacific Islander	American Indian	Two or More Races	Students With IEPs	English Learners	Low Income
School													
District	81	37	44		73						4		60
		30.1%	30.8%		29.3%						13.8%		29.3%
State	215,229	106,179	109,050	129,557	17,623	43,209	16,338	269	503	7,730	10,024	4,347	72,825
		48.9%	52.0%	62.2%	25.3%	38.0%	73.9%	59.5%	43.1%	54.7%	18.3%	13.4%	34.9%

ELA GROWTH													
	All Students	Male	Female	White	Black	Hispanic	Asian	Native Hawaiian /Pacific Islander	American Indian	Two or More Races	Students With IEPs	English Learners	Low Income
School													
District	38.4%	35.8%	40.9%	50.7%	37.9%	48.0%	57.8%			38.6%	37.5%	56.9%	38.6%
State	50.0%	47.5%	52.5%	51.8%	44.5%	48.7%	57.4%	52.4%	49.8%	50.0%	43.5%	48.1%	47.5%

MATH GROWTH													
	All Students	Male	Female	White	Black	Hispanic	Asian	Native Hawaiian /Pacific Islander	American Indian	Two or More Races	Students With IEPs	English Learners	Low Income
School													
District	43.6%	42.5%	44.60	63.3%	43.2%	52.3%	71.3%			34.6%	44.6%	57.4%	43.0%
State	50.0%	49.0%	51.00	51.6%	44.5%	48.9%	58.0%	50.3%	48.5%	49.6%	44.0%	47.6%	47.5%

EL Proficiency on ACCESS						
	# ELS	# Tested	# Proficient	% Proficient	# Long Term EL	% Long Term EL
School	12	12	0	0.0%		
District	30	30	3	10.0%		
State	210,124	207,307	18,810	9.1%	24,957	11.9%

ELA Participation													
	All	Male	Female	White	Black	Hispanic	Asian	Native Hawaiian /Pacific Islander	American Indian	Two or More Races	Students With IEPs	English Learners	Low Income
<b>School</b>													
<b>District</b>	871	440	431	10	815	22				20	105	14	683
		99.8%	99.3%	100.0%	99.5%	100.0%				100.0%	100.0%	100.0%	99.6%
<b>State</b>	1,017,260	520,123	497,137	486,626	169,503	271,186	51,039	1,036	2,854	35,016	142,919	106,440	521,722
		98.1%	98.1%	98.3%	97.0%	98.2%	98.9%	97.5%	98.0%	97.8%	96.9%	98.7%	98.0%

Math Participation													
	All	Male	Female	White	Black	Hispanic	Asian	Native Hawaiian /Pacific Islander	American Indian	Two or More Races	Students With IEPs	English Learners	Low Income
<b>School</b>													
<b>District</b>	879	444	435	10	821	23				20	105	18	689
		100.0%	99.8%	100.0%	99.9%	100.0%				100.0%	100.0%	100.0%	99.9%
<b>State</b>	1,020,683	521,922	498,761	487,140	169,521	272,992	52,057	1,051	2,885	35,037	142,911	110,540	523,904
		98.0%	98.0%	98.2%	96.9%	98.2%	98.9%	97.2%	97.9%	97.7%	96.9%	98.6%	98.0%

ISA Participation													
	All	Male	Female	White	Black	Hispanic	Asian	Native Hawaiian /Pacific Islander	American Indian	Two or More Races	Students With IEPs	English Learners	Low Income
<b>School</b>													
<b>District</b>	266	123	143		249						29		205
		98.4%	99.3%		98.8%						100.0%		98.6%
<b>State</b>	426,608	217,043	209,565	208,207	66,876	113,680	22,099	452	1,165	14,129	52,325	32,340	206,136
		94.9%	95.6%	96.5%	91.1%	95.3%	96.6%	95.6%	94.8%	95.1%	90.6%	94.4%	93.7%